

High Pressure | Series N500

• Chassis Grease • Hydraulics • Air/Water

To handle single 1/4" or 3/8" I.D. hose.

- Compact frame and narrow base.
- Non-sparking ratchet assembly.
- Declutching arbor to prevent damage from reverse winding.
- Standard inlet: 90° swivel joint, 1/4" female NPT threads.
3/8" female NPT threads are optional and **must be specified.**
- Standard outlet: 1/4" female NPT threads.
3/8" female NPT threads are optional and **must be specified.**
- Other threads can be furnished and **must be specified.**
- Standard 1/4" pressure and temperature:
10,000 psi (690 bar), -40°F to +250°F (-40°C to +121°C).
- Standard 3/8" pressure and temperature:
3000 psi (207 bar), -40°F to +250°F (-40°C to +121°C).
- Optional 3/8" pressure: 8000 psi (552 bar) – must specify.
- 4-way roller assembly.
- SR and VR roller positions: swivel joint is standard on the right.
TR roller positions: swivel joint is standard on the left.
Other configurations available, must specify.
- Constant tension is available – consult factory.



Standard configuration shown with optional full-flow swivel joint

**** Reel in standard Reel Packages**



Optional Swivel Mounting Bracket

Part No. 9908.9990.

For N-Series spring retractable reels, available as a kit. Conditions apply, consult factory.

PARTS DRAWING – ISO 92

Model Number	Hose Capacity of Reel feet m			Approx. Weight lb. kg			Standard Roller Assy.	Reel Dimensions*** in. mm			
	I.D. in. mm	1/4 6	3/8 10	NET	UPS/ FedEx SHIP Wt.	Freight SHIP Wt.		C	E	G	H
N515-14-16-8L	25	25	48	64*	83	N203	8	17.62	16.25	9.12	
	8	8	22	29	38		203	448	413	232	
N515-16-17-10.5C	35	35	51	67*	86	N203	10.5	18.5	17	9.12	
	11	11	23	30	39		267	470	432	232	
N515-19-20-10.5J	50	50	63	81*	98	N203	10.5	20.75	20	10.62	
	15	15	29	37	44		267	527	508	270	
N515-23-24-15.5J	75	65	75	92*	110	N203	15.5	23.75	24	12.62	
	23	20	34	42	50		394	603	610	321	

Notes:

A hose stop is necessary to keep spring from unwinding.

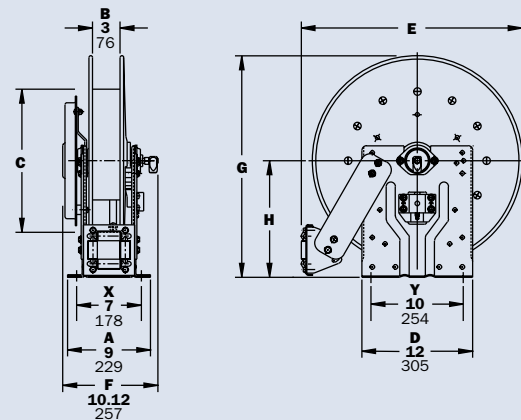
1. Specifications subject to change.
2. Reel models and capacities shown are for standard drag applications; for vertical lift applications, consult factory.
3. Other sizes, from standard components, available on request.
4. Finish: Refer to page 3.

5. Be sure to check dimensions and weights prior to ordering.

NOTICE: A flexible connector must be used between the inlet pipe and the inlet swivel joint.

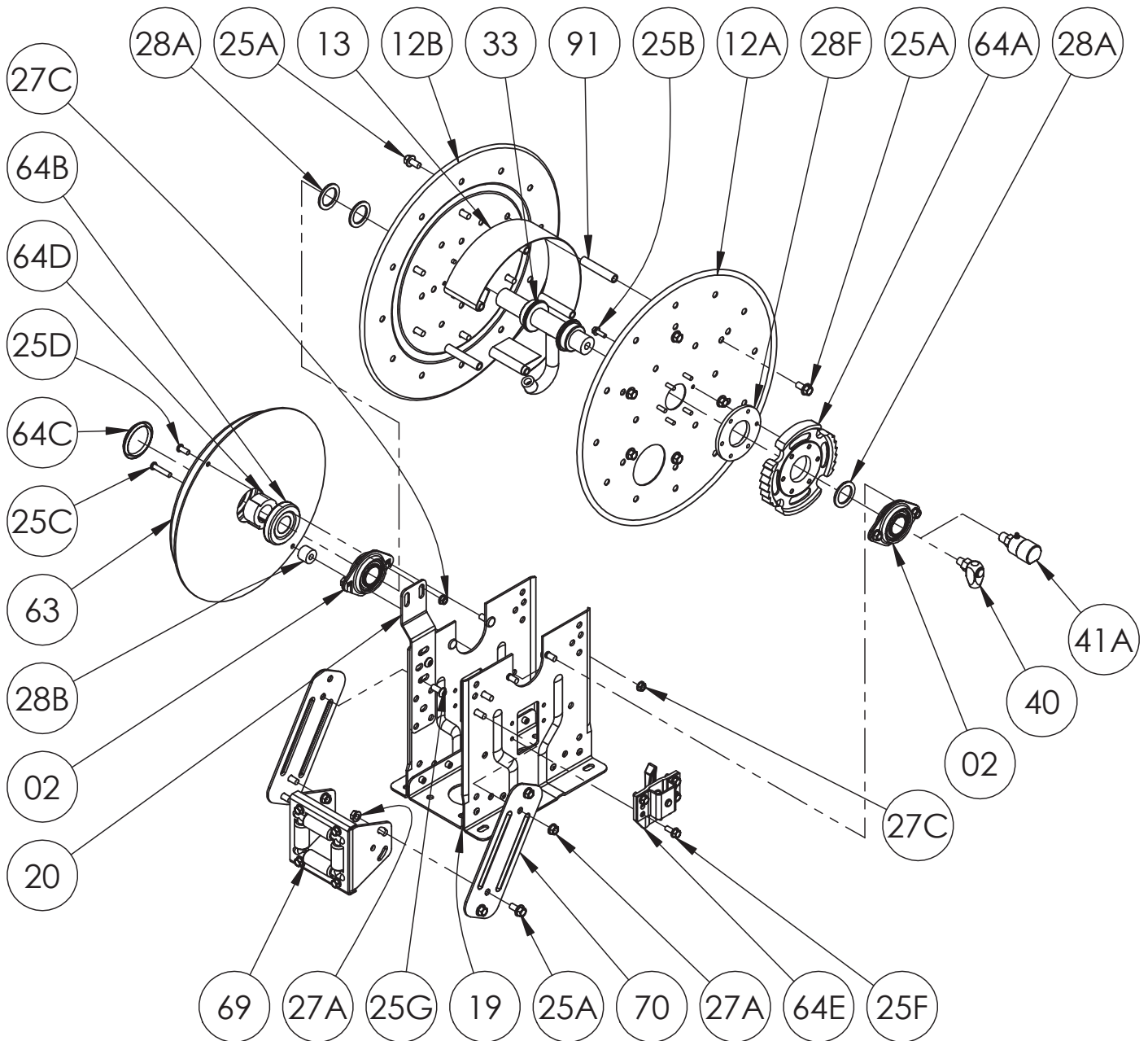
* Dimensional weight may apply when shipped as a parcel package (via FedEx or UPS Ground).

*** X, Y indicate mounting holes. See page 5.



Available Roller Positions





When Ordering Parts
BE SURE TO SPECIFY COMPLETE MODEL NUMBER and SERIAL NUMBER OF REEL
USE PART NUMBER!

<u>Item No.</u>	<u>Description</u>	<u>Part No.</u>	<u>Quantity</u>
2	1" Self Aligning Bearing for N Series Complete (See ISO-210 for parts)	9902.2600	2
12A	Front Disc	Spec Serial #	1
12B	Back Disc (Includes Disc Washer for 23-24 and larger Discs)	Spec Serial #	1
13	10-1/2" Diameter 304 SST Wrap Around Drum (Specify Model)	9905.0138	1
13	15-1/2" Diameter 304 SST Wrap Around Drum (Not Shown) (Specify Model)	9905.0178	1
13	8" Diameter 304 SST Wrap Around Drum (Not Shown) (Specify Model)	9905.0128	1
19	N Series Spring Reel Frame Assembly	Spec Model	1
20	Universal Spring Mounting Bracket for N Series (for "J" Spring), per P20A-00280	9922.0050	1
25A	3/8"-16 x 3/4" Spinlock Bolt	9904.2201	9, 16 or 24
25B	1/4"-20 x 3/4" Spinlock Bolt (For Ratchet Wheel)	9904.1060	6
25C	5/16"-18 x 1-1/2" Hex Socket Button Head Screw (For "J", "C" & "L" Springs)	9904.9104	1 or 2
25D	5/16"-18 x 3/4" Hex Socket Button Head Screw (For "J" Spring)	9904.9101	1
25E	5/16"-18 x 3/4" Spinlock Bolt (For Roller Ass'y)	9904.2101	4
25F	5/16"-18 x 3/4" Thread Cutting Hex Head Bolt (For Ratchet Locking Ass'y)	9958.0055	4
25G	3/8"-16 x 7/8" Socket Head Cap Screw	9904.9201	4 or 9
25H	3/8"-16 x 7/8" Panhead Knurled Bolt (For N Series Bearings)	9904.4276	4
25I	1/4"-20 x 3/4" Spinlock Bolt (For Ratchet Wheel on 8" Drum Reels) (Not Shown)	9904.1060	6
27A	3/8"-16 Spinlock Nut	9904.6200	12
27B	5/16"-18 Small Flange Spinlock Nut (For Roller Ass'y)	9904.5100	4
27C	5/16"-18 Large Flange Spinlock Nut (For "J" & "C" Springs)	9904.6100	2
28A	1-7/8" O.D. x 1-5/16" I.D. x 1/8" Thick Hub Spacer (Plastic), per P28A-00360	9954.0021	3 or 5
28B	Spring Spacer (For "C", "L" and "J" Springs), per P28A-00070	9922.0033	1
28E	1/2" Thick Spring Spacer (For "C" & "L" Springs) (Not Shown), per P28A-00760	9954.0015	1
28F	Disc Washer	9965.0015	1
29	Woodruff Key #9 for Spring Arbor (3/16" x 3/4") (Not Shown)	9916.0080	1
30A	1/4" x 3/8" Blind Pop Rivet (For Frame Assembly)	9922.0058	8
30B	3/16" x 3/4" Stainless Steel Cotter Pin for N Series Ratchet	9922.0028	1
33	1/4" Welded Steel Barstock Hub Assembly (Specify Model and Fitting)	Spec Serial #	1
33	3/8" Welded Steel Barstock Hub Assembly (Specify Model and Fitting)	Spec Serial #	1
40	1/4" 90 Degree MxF Steel Balanced Pressure Swivel Joint 10,000 PSI, BUNA	9925.8111	1
40	1/4" 90 Degree MxF Steel Balanced Pressure Swivel Joint 10,000 PSI, VITON	9925.8114	1
41A	3/8" 90 Degree MxF Steel Full Flow Swivel Joint 5,000 PSI, BUNA	9926.8151	1
41B	3/8" 90 Degree MxF Steel Full Flow Swivel Joint 8,000 PSI, VITON (Not Shown)	9926.8161	1
63	"J" Spring w/ Arbor (Item 64D)	9921.0030	1
63	"L" Spring w/ Arbor (Item 64D) (Not Shown)	9921.0052	1
63	"C" Spring w/ Arbor (Item 64D) (Not Shown)	9921.0018	1
64A	Ratchet Wheel & Hardware (Item 25B), per P64A-00120	9922.0015	1
64B	Dust Cap for Inner Spring Side	9922.0036	1
64C	Dust Cap for Outer Spring Side	9922.0037	1
64D	Spring Arbor for "J", "L" or "C" Springs, per P64A-00110	9922.0002	1
64E	Right Hand Ratchet Locking Assembly Complete (See ISO-207 for Parts)	9922.0312	1
64E	Left Hand Ratchet Locking Assembly Complete (For Reverse Springs ONLY) (See ISO-207 for Parts)	9922.0311	1
69	N203 Complete Roller Assembly for Model N515 (See ISO-208 for Parts)	9939.0110	1
70	N Series Single Roller Arm (Specify Model), per P70A-03020	9941.0030	2
91	3" Long Anodized Threaded Spacer Pipe for Model N715, per P28A-00880	9904.0306	5, 6 or 10